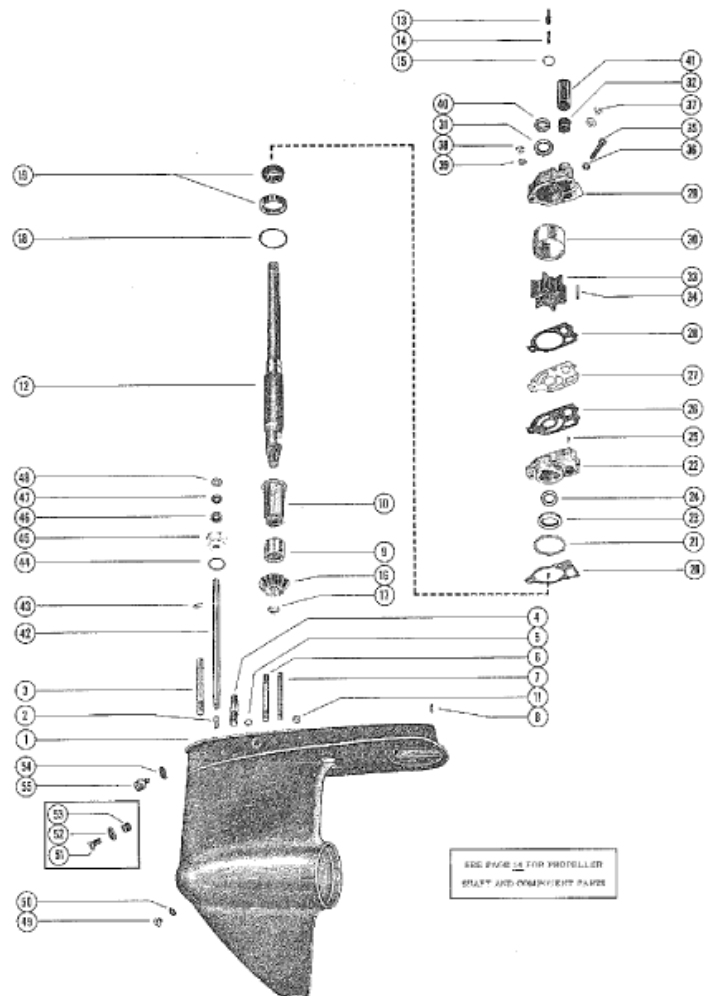


Parts List



Ref	Class	Part	Description	Qty	Comment	Footnote
-	1623	2764A 3	GEAR HOUSING ASSEMBLY, CO	1	SEE NOTE BELOW	
-	1623	3646A 3	GEAR HOUSING ASSEMBLY, CO	1	SEE NOTE BELOW	
1	1623	2764A 1	GEAR HOUSING ASSEMBLY (A)	1		
1	1623	3489A 1	GEAR HOUSING ASSEMBLY (P)	1	SEE REF #19	
1	1623	3646A 1	GEAR HOUSING ASSEMBLY(PL)	1	SEE REF #19	
2	17	37972	PIN, SHIFT CRANK - GEAR HC	1		
3	16	46911	STUD, GEAR HOUSING TO D	1		
4	16	46909	STUD, GEAR HOUSING TO D	2		
5	26	45577	SEAL, GEAR HOUSING	1		
6	16	36292	STUD, WATER PUMP BASE A	1		
7	16	30667	STUD, WATER PUMP BASE A	2		
8	17	46912	PIN, DOWEL - GEAR HOUSI	2		
9	31	35934	BEARING, ROLLER DRIVE SH	1		
10		39235	SLEEVE, THREADED - GEAR	1	EARLY MODELS ONLY	
11	19	38148	WELCH PLUG, GEAR HOUSING	1	EARLY MODELS ONLY	
12	45	36386A 1	DRIVE SHAFT ASSEMBLY	1		
13	17	30545	PIN, DRIVE SHAFT	1		
14	24	34576	SPRING, COMPRESSION - DF	1		
15	25	30613	"O" RING, UPPER - DRIVE SH	1		
16	43	35922	GEAR, PINION - DRIVE SHAFT	1		
17	11	35921	NUT, PINION - GEAR TO DRIVE	1		
18	15	33143A 1	SHIM, DRIVE SHAFT BEARING	AR		
19	31	36387A 1	TAPERED ROLLER BEARING A	1	IDENTIFICATION: STAMPED #M	
19	31	53079A 1	TAPERED ROLLER BEARING A	1	IDENTIFICATION: STAMPED #M	
20	27	33146	GASKET, WATER PUMP BASE	1		
21	25	33145	"O"RING, WATER PUMP BASE	1		
22	46	34447A 1	WATER PUMP BASE ASSEMBLY	1		
22	46	48748A 1	WATER PUMP BASE ASSEMBL	1		
23	26	33144	OIL SEAL, WATER PUMP BAS	1		
24	26	31507	OIL SEAL, WATER PUMP BAS	1		
25	17	35973	DOWEL PIN, WATER PUMP E	2		
26	27	32433	GASKET, LOWER - WATER PUI	1		
27		32435	PLATE, FACE - WATER PUMP B.	1		
28	27	32434	GASKET, UPPER - FACE PLATE	1		
29	46	37433A 1	WATER PUMP BODY ASSEMBL	1		
29	46	48743A 1	WATER PUMP BODY ASSEMBL	1		
30		30915	INSERT, WATER PUMP BOD	1		
30		48752	INSERT, WATER PUMP BOD	1		
31	26	31507	OIL SEAL, WATER PUMP BOC	1		
32	26	38970	SEAL, RUBBER - WATER INLI	1		
33	47	20221	IMPELLER, WATER PUMP	1		